

This is how to take photos of your horse to send in for pinto registration.

**Correct..**

2 x photos of each side of horse with head slightly facing the camera.

4 x 4 inch (10cm x10cm) hard copy photos.

No emailed, photocopied or scanned photos please.



**Incorrect.**

No boots , Bandages, Tail wraps, Riding or harness gear to be on horse.

No makeup on horse.



Nose and/or hooves cut off.



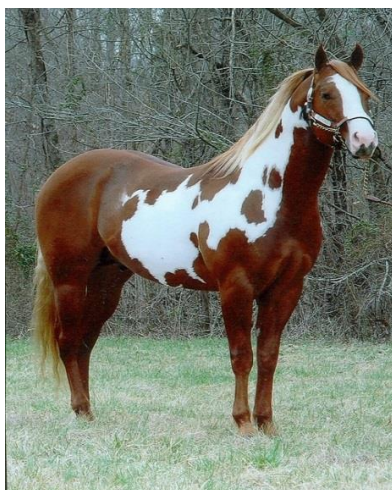
Too much back ground.



Horses head down eating.



Tail and /or back leg cut off.



Not square on the horse's side.



Hooves and legs hidden in grass.